



ASPIRE

— TO MOVE —



Belgrave Terrace, Bath, BA1

Video and physical viewings available. A delightful one bedroom garden flat located on Belgrave Terrace, Bath. Featuring stunning views and a lovely patio garden, this property is not to be missed.

Belgrave Terrace forms part of the friendly Camden neighbourhood extending from Camden Crescent less than 0.5 miles from the city centre. This flat occupies the lower ground floor of a Grade II Listed townhouse and features stunning city views and a well tended patio. This location is popular for the access into Bath and to commute on the train to London within 90 minutes. In addition there are amenities at the end of the Camden Road that include a Doctors, friendly local pub and several hairdressers.

£1,350 PCM

Belgrave Terrace, Bath, BA1

- Video viewing available
- Garden flat
- Stunning views
- Rear patio
- Available now
- Council tax band B
- Holding deposit: £311
- One bedroom
- Unfurnished

Video and physical viewings available. A delightful one bedroom garden flat located on Belgrave Terrace, Bath. Featuring stunning views and a lovely patio garden, this property is not to be missed.

Belgrave Terrace forms part of the friendly Camden neighbourhood extending from Camden Crescent less than 0.5 miles from the city centre. This flat occupies the lower ground floor of a Grade II Listed townhouse and features stunning city views and a well tended patio. This location is popular for the access into Bath and to commute on the train to London within 90 minutes. In addition there are amenities at the end of the Camden Road that include a Doctors, friendly local pub and several hairdressers.

The property is accessed via a communal front courtyard, where the bins are kept. The front to the flat is located just inside the communal front door with stairs leading down to the flat. There is a well appointed bedroom located to the front of the apartment with three storage cupboards, one of these houses the gas boiler for the central heating and hot water. The living and dining area features two recessed areas for storage and a lovely south facing bay window. There is also an electric coal effect fire which does produce heat. The kitchen has base and wall units, oven, hob, fridge/freezer and washing machine. The bathroom has shower over bath, WC and sink.

There is a delightful patio garden that is accessed via the kitchen. The patio is south facing and enjoys fantastic views across the city including views over to Prior Park.

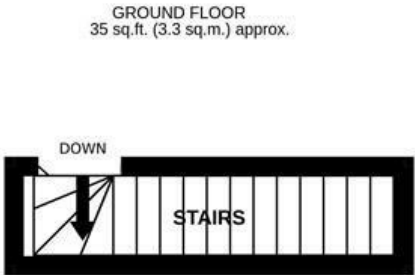
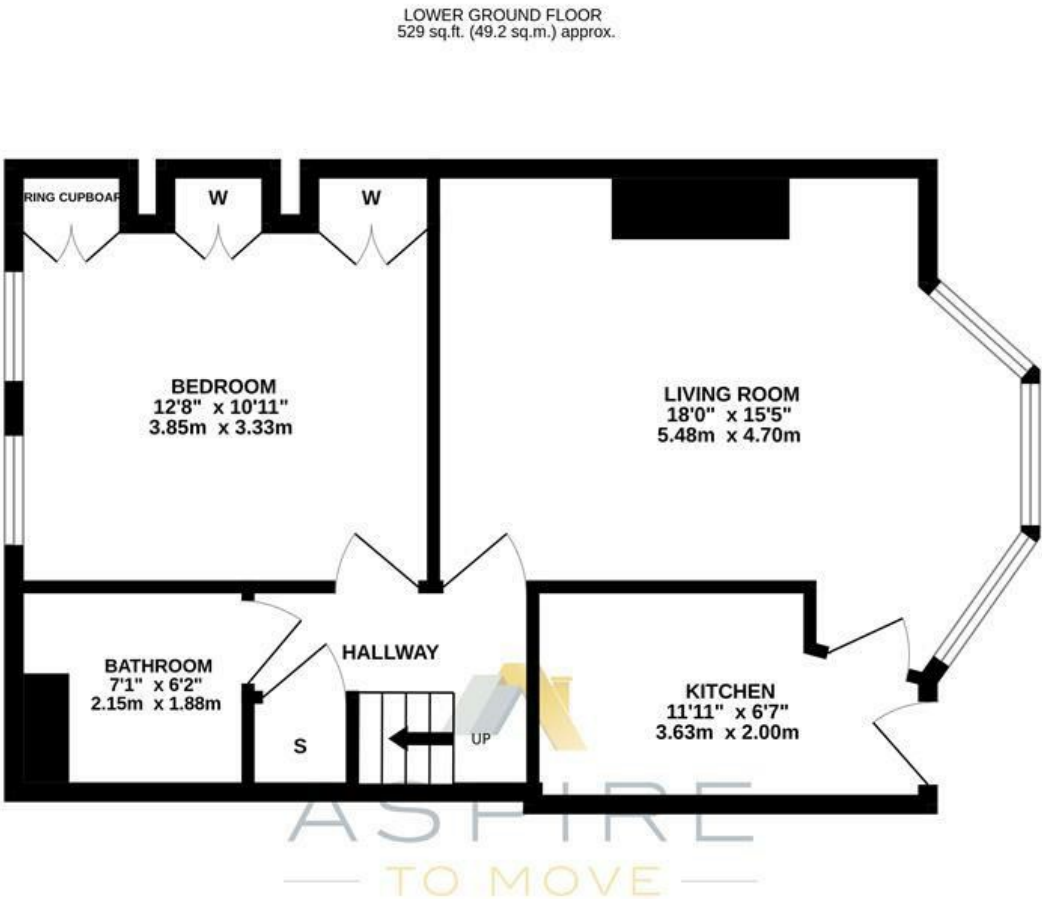
The property is available now and would best suit a single professional or couple.

Council tax band B: £1722.41





Floor Plan



BELGRAVE TERRACE, BATH, BA1

TOTAL FLOOR AREA: 565 sq.ft. (52.5 sq.m.) approx.

Whilst every attempt has been made to ensure the accuracy of the floorplan contained here, measurements of doors, windows, rooms and any other items are approximate and no responsibility is taken for any error, omission or mis-statement. This plan is for illustrative purposes only and should be used as such by any prospective purchaser. The services, systems and appliances shown have not been tested and no guarantee as to their operability or efficiency can be given.

Made with Metropix 6/2025

These particulars, whilst believed to be accurate are set out as a general outline only for guidance and do not constitute any part of an offer or contract. Intending purchasers should not rely on them as statements of representation of fact, but must satisfy themselves by inspection or otherwise as to their accuracy. No person in this firms employment has the authority to make or give any representation or warranty in respect of the property.

